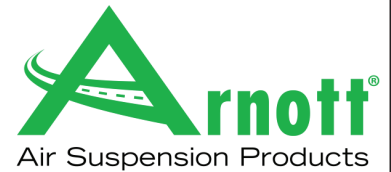


Installation Manual

AS-2884
ARNOTT
REAR AIR STRUT
MERCEDES-BENZ S-CLASS (W220)
W/AIRMATIC, W/O 4MATIC



Congratulations on your purchase of an Arnott® air suspension product. We at Arnott Incorporated are proud to offer a high quality product at the industry's most competitive pricing. Thank you for your confidence in us and our product.

Proper installation is essential to experience and appreciate the benefits of this system. Please take a moment to review these installation instructions before you begin to install these components on your vehicle. The removal and installation of air suspension products should only be performed by a fully qualified, ASE Certified, professional.

It is equally important to be aware of all necessary safety measures while installing your new Air Suspension System. This includes proper lifting and immobilizing of the vehicle and isolation of any stored energy to prevent personal injury or property damage.

"Engineered to Ride, Built to Last®"



WARNING: *The air suspension system is under pressure (up to 10 bar, or 150 lbf/in). Verify pressure has been relieved and disconnect power to the air suspension system prior to disassembly. Do not allow dirt or grease to enter the system. Always wear standard hand, ear, and eye protection when servicing the air suspension system.*

Arnott® is committed to the quality of its products. If you have a question or problem with any Arnott product, please contact Arnott by calling **800-251-8993** during normal business hours or email techassistance@arnottinc.com. (In the EU please call +31 (0)73 7850 580 or email info@arnotteurope.com)

GENERAL INFORMATION:

Reading this manual signifies your agreement to the terms of the general release, waiver of liability, and hold harmless agreement, the full text of which is available at www.arnottinc.com.

- Not to be stored below 5°F (-15°C) or above 122°F (50°C).
- Avoid damage to air lines and cables.
- Removal and installation is only to be performed by fully qualified personnel.
- Use car manufacturer's diagnostic software.

CAUTION: Damage to the vehicle and air suspension system can be incurred if work is carried out in a manner other than specified in the instructions or in a different sequence.



To avoid the possibility of short circuits while working with electric components consult your owner's manual on how to disconnect your battery.



Consult your vehicle owner's manual, service manual, or car dealer for the correct jacking points on your vehicle and for additional care, safety and maintenance instructions. Under no circumstances should any work be completed underneath the vehicle if it is not adequately supported, as serious injuries and death can occur.

AIR STRUT REMOVAL

1. SET STEERING TO STRAIGHT AHEAD.
2. RAISE THE VEHICLE.
3. REMOVE REAR WHEEL.
4. REMOVE THE SIDE COVER OF THE REAR DASH PANEL TO EXPOSE THE TOP OF THE AIR STRUT (LOCATED IN THE REAR WINDOW AREA). (FIGURES 1, 2)

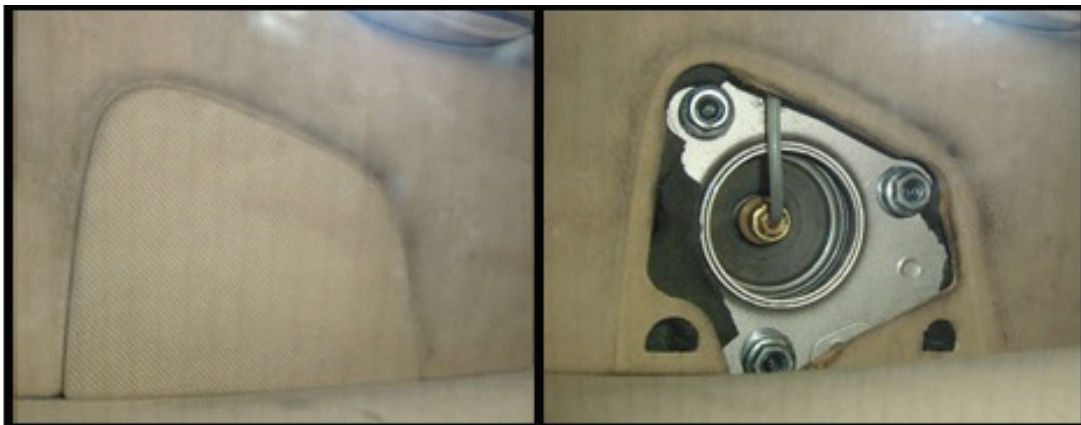


FIGURE 1

FIGURE 2

5. LOOSEN AND REMOVE THE 3 MOUNTING NUTS FROM THE TOP OF THE AIR STRUT. DISCONNECT THE AIR LINE. (FIGURE 3)

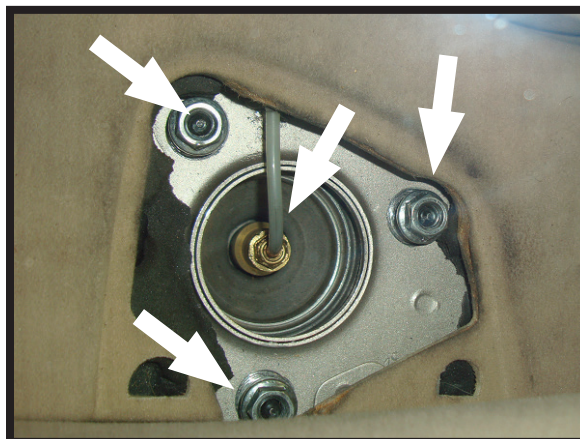


FIGURE 3

6. REMOVE RUBBER BOOT AND DISCONNECT ELECTRICAL CONNECTOR LEADING TO THE SHOCK DAMPER SOLENOID. (FIGURES 4, 5).

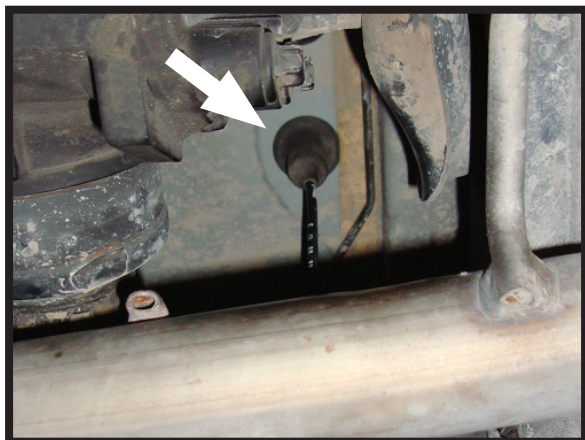


FIGURE 4

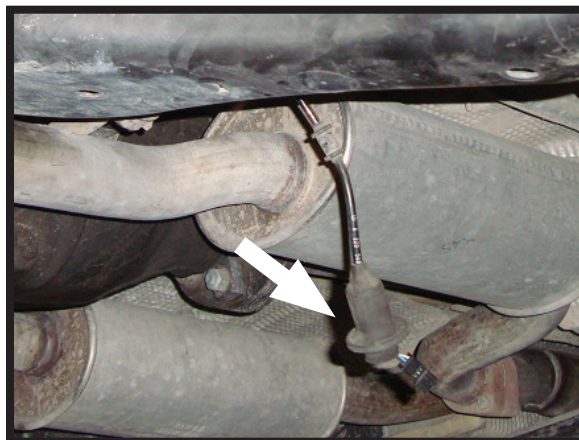


FIGURE 5

7. REMOVE THE BRAKE CALIPER RETAINING CLIP. (FIGURE 6)

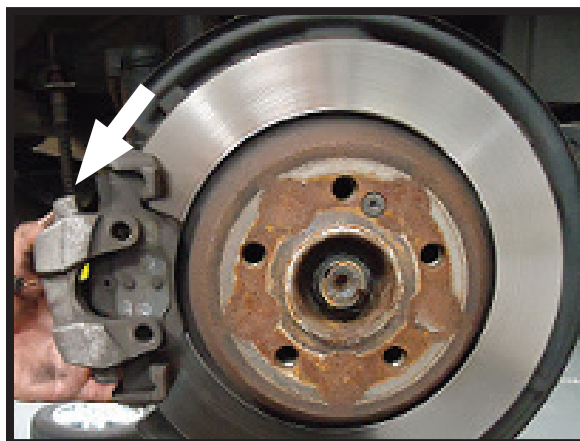


FIGURE 6

8. LOOSEN THE TWO (2) BOLTS ON THE BACKSIDE OF THE BRAKE CALIPER. (FIGURE 7)

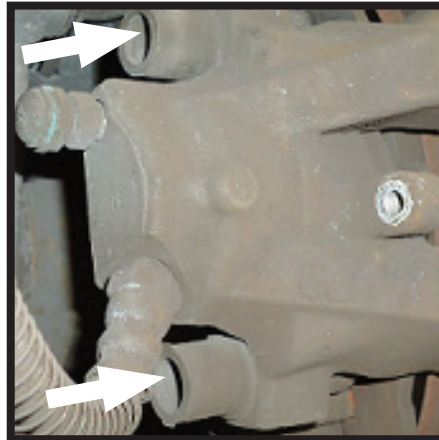


FIGURE 7

9. DISCONNECT THE SENSOR CONNECTOR AND REMOVE THE SENSOR BRACKET. (FIGURE 8, 9)

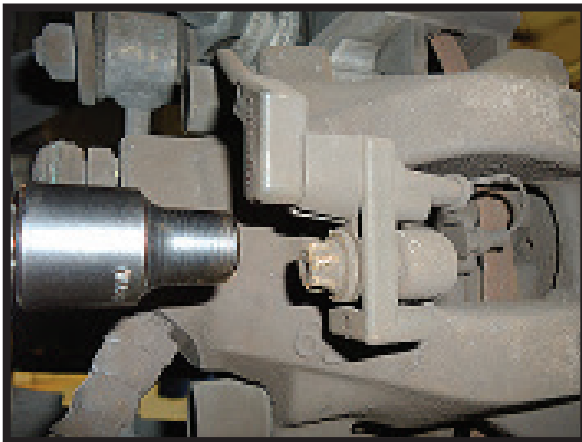


FIGURE 8



FIGURE 9

10. SECURE THE BRAKE CALIPER. (FIGURE 10)



FIGURE 10

11. DISASSEMBLE THE OUTER SUSPENSION ARM. (FIGURE 11)

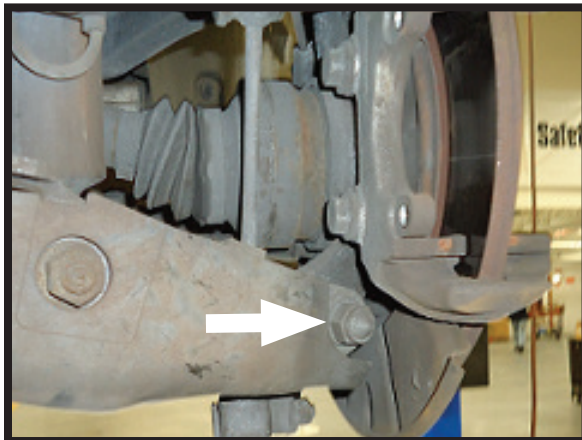


FIGURE 11

12. DISASSEMBLE THE STABILIZER BAR LINK. (FIGURES 12, 13)

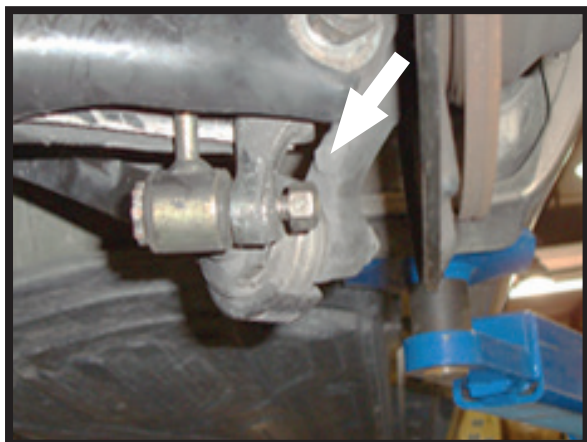


FIGURE 12

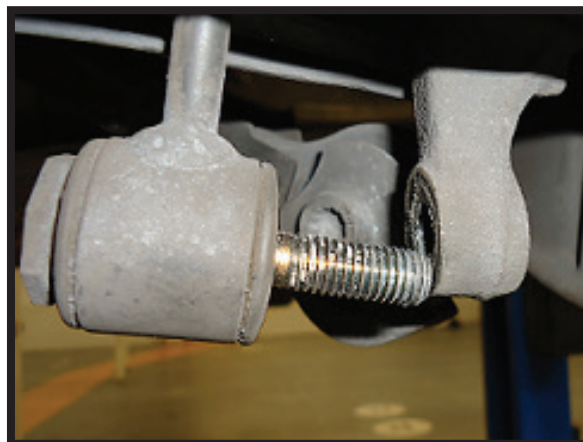


FIGURE 13

13. REMOVE THE NUT AND BOLT CONNECTING THE STRUT ASSEMBLY TO THE SUSPENSION ARM. (FIGURE 14)



FIGURE 14

14. LOOSEN THE LOWER CONTROL ARM NUT SLIGHTLY (THIS WILL ALLOW THE LOWER CONTROL ARM TO SWING DOWN). (FIGURE 15)

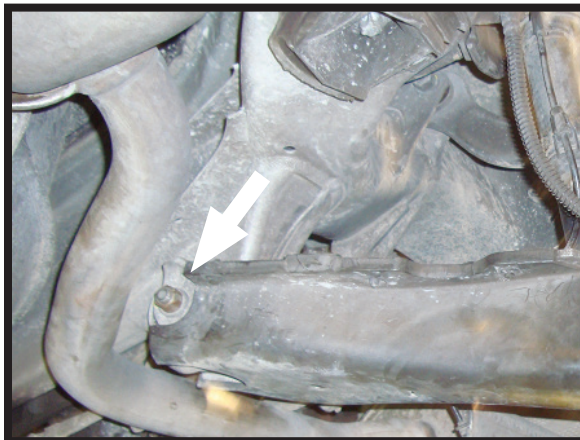


FIGURE 15

15. REMOVE STRUT ASSEMBLY FROM VEHICLE. (FIGURES 16, 17)



FIGURE 16

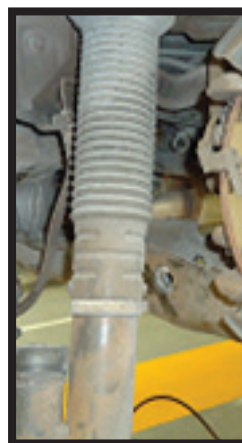


FIGURE 17

AIR STRUT INSTALLATION



Tighten all nuts and bolts to manufacturer's specifications during the installation process.

1. INSTALLATION IS IN REVERSE ORDER OF AIR STRUT REMOVAL.